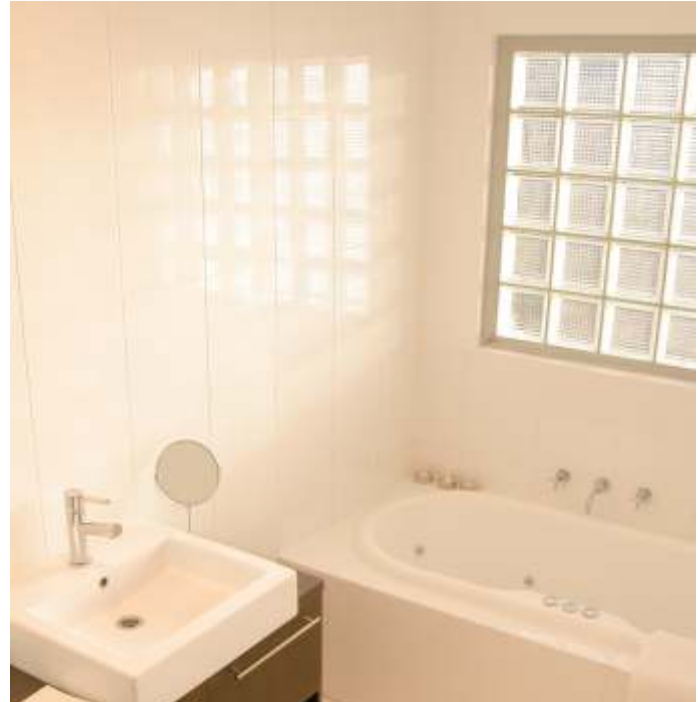


D.I.Y. FRAMELESS GLASS BLOCK SYSTEM

Building a glass block feature wall has never been easier. This new frameless system is DIY friendly, enabling you to complete the job like a true professional.

Australian Patent No 719429



WHAT DO YOU NEED?

- 190x190x80mm Glass Blocks
- PACK "A" = Blokup Horizontal Separation Strips (2/pk)
- PACK "B" = Blokup Vertical Separation Strips (5/pk)
- PACK "C" = Blokup Frameless Anchor Clips (7/pk)
- 300g cartridge of Dunlop Glass Block Adhesive for every 6 blocks
- 5kg of Dunlop Glass Block Grout for every 50 blocks
- Timber screws or masonry anchors (same amount as Pack "C")

HOW MANY PACKS DO I NEED?

NO. OF GLASS BLOCKS	WIDE					
	ONE	TWO	THREE	FOUR	FIVE	SIX
ONE	1B, 1C	1A, 1C	1A, 1C	1A, 1C	1A, 1C	1A, 1C
TWO	1B, 1C	1A, 1C	1A, 1C	1A, 1B, 1C	1A, 2B, 2C	1A, 2B, 2C
THREE	1B, 1C	1A, 1B, 1C	1A, 1B, 2C	2A, 1B, 2C	2A, 1B, 2C	2A, 2B, 2C
FOUR	1B, 1C	1A, 1B, 2C	1A, 2B, 2C	2A, 1B, 2C	2A, 3B, 2C	2A, 4B, 2C
FIVE	1B, 2C	1A, 1B, 2C	2A, 1B, 2C	3A, 2C	3A, 2B, 2C	3A, 4B, 3C
SIX	2B, 2C	1A, 1B, 2C	3A, 2C	3A, 1B, 3C	3A, 5B, 3C	3A, 6B, 3C
SEVEN	2B, 2C	2A, 3C	3A, 1B, 3C	4A, 3B, 3C	4A, 4B, 3C	4A, 6B, 3C
EIGHT	2B, 3C	2A, 3C	2A, 3B, 3C	4A, 4B, 3C	4A, 5B, 3C	4A, 8B, 3C
NINE	2B, 3C	2A, 1B, 3C	3A, 2B, 3C	5A, 1B, 3C	5A, 4B, 4C	5A, 9B, 4C
TEN	2B, 3C	2A, 1B, 3C	3A, 3B, 4C	5A, 2B, 4C	5A, 5B, 4C	5A, 10B, 4C
ELEVEN	3B, 4C	2A, 2B, 4C	3A, 4B, 4C	6A, 1B, 4C	6A, 6B, 4C	6A, 10B, 4C
TWELVE	3B, 4C	2A, 3B, 4C	3A, 5B, 4C	6A, 3B, 4C	6A, 7B, 4C	6A, 12B, 5C
THIRTEEN	3B, 4C	2A, 3B, 4C	4A, 3B, 4C	7A, 1B, 5C	7A, 7B, 5C	7A, 12B, 5C
FOURTEEN	3B, 4C	3A, 1B, 5C	4A, 5B, 5C	7A, 3B, 5C	7A, 8B, 5C	7A, 14B, 5C
FIFTEEN	3B, 5C	3A, 2B, 5C	4A, 6B, 5C	8A, 2B, 5C	8A, 8B, 5C	8A, 15B, 5C
SIXTEEN	4B, 5C	4A, 5C	5A, 7B, 5C	8A, 4B, 5C	8A, 10B, 6C	8A, 16B, 6C

D.I.Y. FRAMELESS GLASS BLOCK SYSTEM

BEFORE YOU GET STARTED

- ✦ Pack "A" contains your horizontal separation strips - These go the full width of your opening, placed below your first row of blocks, then between every course horizontally
- ✦ Pack "B" contains your vertical separation strips - These go between every single block vertically
- ✦ Pack "C" contains your frameless anchor clips - These are placed on either end of the horizontal strips and also onto every vertical strip, between the blocks, on your very top row
- ✦ Tools require - hacksaw, silicone gun and screwdriver
- ✦ Other requirements - Dunlop Glass Block Adhesive (1 tube for every 6 blocks), Dunlop Glass Block Grout (5kg for every 50 blocks) and screws or masonry anchors (same amount as frameless anchor clips in Pack "C").

INSTALLATION PROCEDURE

- 1 Determine & create your clear internal finished opening.**
Use multiples of 193mm for both the height and the width, but you must add an extra 3mm for clearance eg: 6 blocks high x 3 blocks wide $(6 \times 193) + 3 = 1161\text{mm}$ High x $(3 \times 193) + 3 = 582\text{mm}$ Wide
- 2 Cut your horizontal separation strips (pack "A") to size**
Cut these to 20mm less than the size of your opening width (eg: 562mm)
TIP: Utilise any off-cuts. Cut @ 180mm & use as more vertical strips
- 3 Place a frameless anchor clip (pack "C") onto each end of your horizontal separation strips**
- 4 Locate the position of your blocks in your wall thickness**
By placing your first horizontal strip with anchor clips, along the base of your opening and fixing through the frameless anchor clips into the sides of your opening.
- 5 Place a line of silicone through the centre line only of the separation strip**
- 6 Lay your first glass block**
- 7 Place a line of silicone down the edge of the glass block, through the centre only**
- 8 Place a vertical separation strip (pack "B") down the edge of the glass block**
- 9 Place a line of silicone down the vertical separation strip, through the centre only**
- 10 Lay your second glass block**
You're away! Keep going and finish the first row
- 11 Place a line of silicone across the top of the glass blocks through the centre only**
- 12 Place a horizontal separation strip (pack "A") with anchor clips, along the top of your first row and fix into sides**
- 13 Replace steps 5 through to 12 until your top row**
- 14 Top row:** The only difference here is, on every vertical separation strip, you also use a frameless anchor clip to fix into the top of your opening
- 15 You've finished "Blokup"- ing the panel, time to "grout"**
Grouting is completed by applying per the instructions on the tub
- 16 Cleaning**
Once dry, clean with a dry rag, buff & polish